

FCB Miniature PCB Connectors

Miniature jacks/sockets for Thermocouple and RTD circuits. Designed for direct soldering onto printed circuit boards.

Available in flat mounting, rear mounting and side mounting versions. Other versions also available.

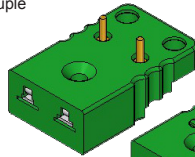
- Glass filled thermoplastic body with original thermocouple material pins and spring loaded inserts
- Polarized pins ensure proper connection
- **FCB1**: Brass screws for soldering on the PCB
- **FCB2/FCB3**: Copper pins for soldering on the PCB
- Rugged one body design
- ANSI colours also available

Temperature Rating

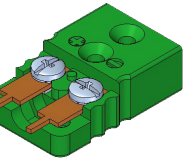
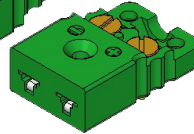
- +200°C Max.

Dimensions

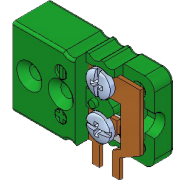
- (W) 16mm x (L) 25.4mm x (H) 8mm



FCB1 Flat Mounting



FCB2 Rear Mounting



FCB3 Side Mounting

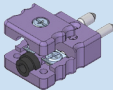
Note: PCB connectors may transition to silver-plated copper pins to improve performance. Contact sales for further updates.

IEC code		K	J	T	N	E	R/S	B	C	RTD
socket code	flat mounting	FCB1-K	FCB1-J	FCB1-T	FCB1-N	FCB1-E	FCB1-R	FCB1-B	FCB1-C	FCB1-U
	rear mounting	FCB2-K	FCB2-J	FCB2-T	FCB2-N	FCB2-E	FCB2-R	FCB2-B	FCB2-C	FCB2-U
	side mounting	FCB3-K	FCB3-J	FCB3-T	FCB3-N	FCB3-E	FCB3-R	FCB3-B	FCB3-C	FCB3-U

Accessories

FMG/RSG Connector Grommets

Can be fitted in the entrance hole of the connector to prevent moisture and dirt ingress. Has limited strain relief capabilities. Available for miniature and standard connectors. Temperature rating +200°C Max.



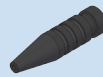
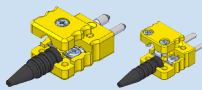
Miniature (FMG)



Standard (RSG)

FBP/RBP Bending Protection Seals

Bending protection for thermocouples and wire being used with miniature and standard connectors. Prevents mechanical damage of wires at entrance point of the connector. Temperature rating +200°C Max.



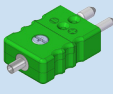
Miniature (FBP)



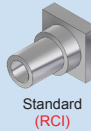
Standard (RBP)

FCI/RCI Crimp Inserts

Can be fitted in the entrance hole of a connector. Designed for soldering or crimping on mineral insulated cable, or crimping on insulated wire. Brass machined insert with 0.1 mm tolerance on the cable OD.



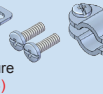
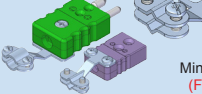
Miniature (FCI)



Standard (RCI)

FWC/RWC Wire Clamp Brackets

Provides optimum support/strain relief for connector wires. Easy to fit, the construction allows a large difference in maximum and minimum wire diameters. Available to suit miniature and standard connectors.



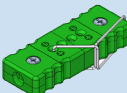
Miniature (FWC)



Standard (RWC)

FLC1/RLC1 Connector Locking Clips

In order to prevent accidental disconnection a locking plate can be used. Available as glass filled thermoplastic for miniature and stainless steel clip for standard connectors. Can be placed and removed without any tools.



Miniature (FLC1)



Standard (RLC1)

FBT/RBT Connector Protection Boots

Transparent, flexible, silicone rubber boots that cover the connector set snugly and prevent moisture, water and dirt ingress. Available for two and three pin, miniature and standard connectors. Temperature rating +200°C Max.



Miniature (FBT)

Standard (RBT)

Note
For one set please order 2 pieces

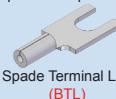
BTC Barrier Terminal Blocks

For use in terminal boxes and behind panels for connection of thermocouple and RTD circuits. For use with calibration codes: K, J, T, N, E, R/S, RTD. Accepts wires up to 3.0mm. Temperature rating +200°C Max.



BTL/BTR Terminal Lugs

For wire termination on thermocouples or on wires fitted into barrier terminal blocks. Calibration codes: K, J, T, N, E, B, R/S, RTD. Supplied as a set: 1 positive terminal lug and 1 negative terminal lug. Accepts wires up to 1.2mm.



Spade Terminal Lug (BTL)



Ring Terminal Lug (BTR)

