

HH-808 8-Channel Thermocouple Data Logger

The HH-808 is a lightweight handheld thermometer & data logger with a large LCD display that can accept up to 8 simultaneous thermocouple inputs. It is ideal for easily taking multiple readings in real-time or logging multiple temperature points over time. The large LCD display has a configurable sample rate and a backlight that can be toggled on and off to make readings easy to see in almost any lighting conditions.

These units are simple to operate and configure from the large easily legible buttons for quick and hassle-free deployment.

Easily and instantly switch between thermocouple types at the touch of a button, Types K, J, E, T, R, S, N, B.

Powered by one 9V battery or an optional power adaptor, the unit is capable of sampling, processing and displaying measurements without being connected to a computer and will store recorded data to its own on-board memory.

With user friendly, free software you can quickly download and view your recorded data, name your device, give each channel a unique label, export to CSV or PDF formats and even take a snapshot of your data as a trend for easier viewing and integration with your reports.

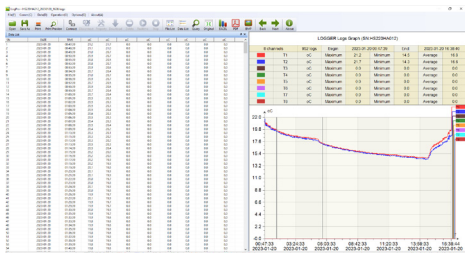
- 8 selectable Thermocouple input channels (T1-T8)
- -200°C to +1800°C measuring range
- Capacity for 86,000 readings
- 1 second sampling rate
- °C / °F selectable
- Min, Max, Hold, Offset
- Low battery indicator
- Free LogPro Windows software for real-time logging or data retrieval
- Optional UK and EU power adaptors available
- Supplied with battery, 1m USB cable and user manual



Input (miniature plug) *	8 x Thermocouple
K	-200°C to +1372°C (-328°F to +2501°F)
J	-200°C to +1000°C (-328°F to +1832°F)
E	-200°C to +750°C (-328°F to +1382°F)
T	-200°C to +400°C (-328°F to +752°F)
R	0°C to +1760°C (+32°F to +3200°F)
S	0°C to +1760°C (+32°F to +3200°F)
N	0°C to +1300°C (+32°F to +2372°F)
B	100°C to +1800°C (+212°F to +3272°F)
Measurement Range	
Accuracy **	±0.8°C ±2%FS
Resolution	0.1°C (0.1°F)
Record Capacity	86,000 readings across all channels
Display Sampling Rate	1 to 240 seconds
Logging Interval	2 to 86,400 seconds
Display	Backlit LCD display
Functions	Min, Max, Hold, Offset, Low Battery
Operating Temperature	0°C to +50°C (0 to 80%RH)
Power	1 x 9V battery
	Optional UK or EU Power Adaptor
Battery Life	Approximately 3 months
Dimensions	165mm (L) x 100mm (W) x 45mm (D)
Weight	~408g

* Thermocouple(s) not supplied - available separately

** Accuracy stated is for thermometer only. Thermocouple sensor inaccuracy should also be considered



HH-808PA-UK



HH-808PA-EU

Optional power adaptors