

GS Glycerine-Filled Pressure Gauge (63mm Ø)

Bottom or back entry. 1/4 inch BSPP process entry thread. Ranges available from 1 bar to 400 bar (15 psi to 5800 psi). IP 65 rated. The Wika GS range of pressure gauges are suitable for use in all gaseous and liquid media that will not attack the copper alloy parts or obstruct the pressure system. Commonly used for pneumatic, heating, ventilation, air-conditioning and medical engineering applications.

- Bottom or back entry
- 1/4 inch BSP Parallel process entry thread
- 0..1 bar to 0..400 bar (0..15 psi to 0..5800 psi)
- Vibration and shock resistant

Technical Details	
Design	EN 837-1
Accuracy Class	1.6
Movement	Copper Alloy
Process Connection	1/4" BSP Parallel, Brass
Pressure Element	Copper Alloy < 60 bar: C-type; ≥ 60 bar: Helical type
Pressure Limitation	Steady: 3/4 x full scale value
	Fluctuating: 2/3 x full scale value
	Short Time: full scale value
Dial	63mm Ø, plastic ABS, white, with pointer stop pin
Pointer	Plastic, black
Case	Natural finish stainless steel, with pressure relief at top. O-ring seal between case and connection
Window	Plastic, crystal-clear
Bezel Ring	Crimp ring, glossy finish stainless steel, triangular bezel
Filling Liquid	Glycerine 99.7%
Temperature Effect	When measuring system temperature deviates from reference temp. (+20°C): Max. ±0.4 %/10 K of the span
Ingress Protection	IP 65 per EN 60529 / IEC 60529
Operating Temperature	Ambient: -20°C to +60°C



Rear view of back entry gauge and mounting bracket (supplied)



63mm Ø dial

Also available as 50mm Ø, 100mm Ø, vacuum

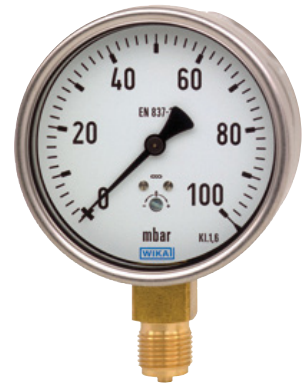
63mm Ø Dial (1/4" BSPP)			
Pressure Range (dual scale)		Order Code	
bar	psi	Back Entry	Bottom Entry
0..1	0..15	GS01R	GS01B
0..2	0..30	GS02R	GS02B
0..4	0..60	GS04R	GS04B
0..6	0..90	GS06R	GS06B
0..10	0..150	GS10R	GS10B
0..16	0..230	GS16R	GS16B
0..25	0..360	GS25R	GS25B
0..40	0..580	GS40R	GS40B
0..60	0..900	GS60R	GS60B
0..100	0..1500	GS100R	GS100B
0..160	0..2300	GS160R	GS160B
0..250	0..3600	GS250R	GS250B
0..400	0..5800	GS400R	GS400B

GC Low Pressure Industrial Capsule Gauge (100mm Ø)

Bottom entry. 1/2 inch BSPP process entry thread. Ranges available from 0..16 mbar to 0..600 mbar. IP 54 rated. The Wika GC range of capsule pressure gauges are suitable for use in dry and gaseous media that will not attack copper alloy parts. Commonly used for medical, vacuum, environmental and laboratory applications, and also for contents measurement and filter monitoring. Supplied as standard with a stainless steel case, brass thread and copper alloy movement. Zero adjustment through front window.

- Bottom entry
- 1/2 inch BSP Parallel process entry thread
- 0..16 mbar to 0..600 mbar
- Zero adjustment in front

Technical Details	
Design	EN 837-3
Accuracy Class	1.6
Movement	Copper Alloy
Process Connection	1/2" BSP Parallel, Brass
Pressure Element	Copper Alloy
Pressure Limitation	Steady: full scale value
	Fluctuating: 0.9 x full scale value
Dial	100mm Ø, aluminium, white, black lettering
Pointer	Aluminium, black
Case	Stainless steel
Window	Instrument glass
Bezel Ring	Cam ring (bayonet type), stainless steel
Seal	NBR
Zero Adjustment	In front
Temperature Effect	When measuring system temperature deviates from reference temp. (+20°C): Max. ±0.6 %/10 K of the span
Ingress Protection	IP 54 per EN 60529 / IEC 60529
Operating Temperature	Ambient: -20°C to +60°C



100mm Ø dial

Also available as 63mm Ø, 160mm Ø, all-stainless steel, vacuum

100mm Ø Dial (1/2" BSPP)		
Pressure Range (mbar)	Order Code	
	Bottom Entry	
0..16	GC16B	
0..25	GC25B	
0..40	GC40B	
0..60	GC60B	
0..100	GC100B	
0..160	GC160B	
0..250	GC250B	
0..400	GC400B	
0..600	GC600B	