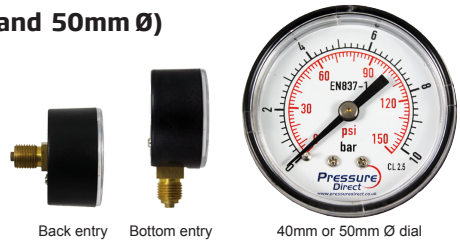


## GPD Plastic Case Utility Pressure Gauge (40mm Ø and 50mm Ø)

40mm and 50mm diameter options. Bottom or back entry. BSPP process entry thread (1/8 inch for 40mm, 1/4 inch for 50mm). Ranges available from 0.1 bar (0.15 psi) to 0.60 bar (0.900 psi). IP 51 rated. The Pressure Direct GPD range of gauges are suitable for use in all gaseous and liquid media that will not attack the copper alloy parts or obstruct the pressure system. Supplied with a robust black plastic case and plastic window. Commonly used for pneumatic, heating, ventilation, air-conditioning and medical engineering applications.

- 40mm and 50mm Ø
- Bottom or back entry
- BSP Parallel process entry threads (1/8" = 40mm Ø, 1/4" = 50mm Ø)
- 0.1 bar to 0.60 bar (0.15 psi to 0.900 psi)
- Robust black plastic case



Technical Details	
<b>Design</b>	EN 837-1
<b>Accuracy Class</b>	2.5
<b>Movement</b>	Copper Alloy
<b>Process Connection</b>	BSP Parallel, Brass (1/8" = 40mm Ø, 1/4" = 50mm Ø)
<b>Pressure Element</b>	Copper Alloy
<b>Pressure Limitation</b>	Steady: 3/4 x full scale value
	Fluctuating: 2/3 x full scale value
	Short Time: full scale value
<b>Dial</b>	40mm or 50mm Ø, plastic, white, pointer stop pin
<b>Pointer</b>	Aluminium, black
<b>Case</b>	Plastic, black
<b>Window</b>	Plastic, snap-fit
<b>Temperature Effect</b>	When measuring system temperature deviates from reference temp. (+20°C): Max. ±0.6 %/10 K of the span
<b>Ingress Protection</b>	IP 51 per EN 60529 / IEC 60529
<b>Operating Temperature</b>	Ambient: -20°C to +60°C

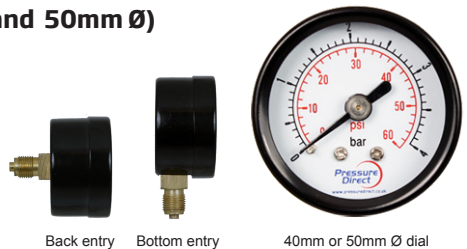
40mm Ø Dial (1/8" BSPP)			
Pressure Range (dual scale)		Order Code	
bar	psi	Back Entry	Bottom Entry
0..1	0..15	GPD01R	GPD01B
0..2	0..30	GPD02R	GPD02B
0..4	0..60	GPD04R	GPD04B
0..7	0..100	GPD07R	GPD07B
0..10	0..150	GPD10R	GPD10B
0..16	0..230	GPD16R	GPD16B
0..20	0..300	GPD20R	GPD20B
0..25	0..360	GPD25R	GPD25B
0..40	0..580	GPD40R	GPD40B
0..60	0..900	GPD60R	GPD60B

50mm Ø Dial (1/4" BSPP)			
Pressure Range (dual scale)		Order Code	
bar	psi	Back Entry	Bottom Entry
0..1	0..15	GPD01R/50	GPD01B/50
0..2	0..30	GPD02R/50	GPD02B/50
0..4	0..60	GPD04R/50	GPD04B/50
0..7	0..100	GPD07R/50	GPD07B/50
0..10	0..150	GPD10R/50	GPD10B/50
0..16	0..230	GPD16R/50	GPD16B/50
0..20	0..300	GPD20R/50	GPD20B/50
0..25	0..360	GPD25R/50	GPD25B/50
0..40	0..580	GPD40R/50	GPD40B/50
0..60	0..900	GPD60R/50	GPD60B/50

## GMD Steel Case Utility Pressure Gauge (40mm Ø and 50mm Ø)

40mm and 50mm diameter options. Bottom or back entry. BSPP process entry thread (1/8 inch for 40mm, 1/4 inch for 50mm). Ranges available from 0.1 bar (0.15 psi) to 0.25 bar (0.360 psi). IP 51 rated. The Pressure Direct GMD range of gauges are suitable for use in all gaseous and liquid media that will not attack the copper alloy parts or obstruct the pressure system. Supplied with a robust black steel case and clear glass window. Commonly used for pneumatic, heating, ventilation, air-conditioning and medical engineering applications.

- 40mm and 50mm Ø
- Bottom or back entry
- BSP Parallel process entry threads (1/8" = 40mm Ø, 1/4" = 50mm Ø)
- 0.1 bar to 0.25 bar (0.15 psi to 0.360 psi)
- Robust black steel case



Technical Details	
<b>Design</b>	EN 837-1
<b>Accuracy Class</b>	2.5
<b>Movement</b>	Copper Alloy
<b>Process Connection</b>	BSP Parallel, Brass (1/8" = 40mm Ø, 1/4" = 50mm Ø)
<b>Pressure Element</b>	Copper Alloy
<b>Pressure Limitation</b>	Steady: 3/4 x full scale value
	Fluctuating: 2/3 x full scale value
	Short Time: full scale value
<b>Dial</b>	40mm or 50mm Ø, aluminium, white, pointer stop pin
<b>Pointer</b>	Aluminium, black
<b>Case</b>	Steel, black
<b>Window</b>	Glass
<b>Temperature Effect</b>	When measuring system temperature deviates from reference temp. (+20°C): Max. ±0.6 %/10 K of the span
<b>Ingress Protection</b>	IP 51 per EN 60529 / IEC 60529
<b>Operating Temperature</b>	Ambient: -20°C to +60°C

40mm Ø Dial (1/8" BSPP)			
Pressure Range (dual scale)		Order Code	
bar	psi	Back Entry	Bottom Entry
0..1	0..15	GMD01R	GMD01B
0..2	0..30	GMD02R	GMD02B
0..4	0..60	GMD04R	GMD04B
0..7	0..100	GMD07R	GMD07B
0..10	0..150	GMD10R	GMD10B
0..16	0..230	GMD16R	GMD16B
0..20	0..300	GMD20R	GMD20B
0..25	0..360	GMD25R	GMD25B

50mm Ø Dial (1/4" BSPP)			
Pressure Range (dual scale)		Order Code	
bar	psi	Back Entry	Bottom Entry
0..1	0..15	GMD01R/50	GMD01B/50
0..2	0..30	GMD02R/50	GMD02B/50
0..4	0..60	GMD04R/50	GMD04B/50
0..7	0..100	GMD07R/50	GMD07B/50
0..10	0..150	GMD10R/50	GMD10B/50
0..16	0..230	GMD16R/50	GMD16B/50
0..20	0..300	GMD20R/50	GMD20B/50
0..25	0..360	GMD25R/50	GMD25B/50