

HH-805 Single Input Pt100 Indicator

Battery-powered, single input hand-held Pt100 indicator. Accepts 3 or 4-wire Pt100 sensors, attached via a 4-pin DIN plug (hand-held Pt100 sensors with 4-pin DIN plugs also available).

The HH-805 has a sampling rate of every 1 second with a clear, easy-to-read, backlit display, capable of a maximum reading of 19999. The temperature measurement range of the unit is -200°C to +800°C (-328°F to +1472°F), with an accuracy of $\pm(0.05\% \text{ reading} + 0.2^\circ\text{C})$ [$\pm(0.05\% \text{ reading} + 0.4^\circ\text{F})$].

The HH-805 has a strong plastic case with a removable rubber protective holster and integrated flip-out stand.

- Single Input (4-pin DIN style connection)
- °C / °F selectable
- Backlit 4½ digit LCD display
- Polarity indicator, Overload indicator
- Min, Max with elapsed time, Avg, Recall and Data hold functions
- Hi/Lo setting with warning alarm, auto power off / low battery indicator
- Removable rubber protective holster with flip-out stand



4-pin DIN Connector



A dual input version of the HH-805 is also available. Contact sales for further information.



Pt100 sensors with 4-pin DIN connectors also available. Contact sales for information.

Order Code

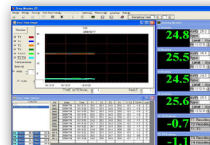
HH-805

Technical Details	
Input	1 x Pt100 attached via 4-pin DIN plug *
Measurement Range	-200°C to +800°C (-328°F to +1472°F)
Accuracy **	$\pm(0.05\% \text{ rdg} + 0.2^\circ\text{C})$ [$\pm(0.05\% \text{ rdg} + 0.4^\circ\text{F})$]
Resolution	0.1°C / 0.2°F
Sample Rate	Every 1 second
Display	Backlit 4½ digit LCD display (max. reading of 19999)
Operating Range	0°C to +50°C (+32°F to +122°F) at < 70% RH
Storage Range	-20°C to +60°C (-4°F to +140°F) at 0 to 80% RH (battery removed)
Power	4 x AAA batteries (supplied)
Dimensions	160mm (H) x 83mm (W) x 38mm (D)
Weight	~260g (with holster/batteries)

HDR-116U/126U Hand-held RTD Indicator/Data Logger (1 or 2 Channel)

Easy to use, battery-powered hand-held RTD indicator/data logger. Available with 1 input channel (HDR-116U) or 2 input channels (HDR-126U). Connect your RTD sensor to the device using a 4-pin DIN connector. Selectable between RTD inputs Pt100/200/500 and 1000. The unit is of a robust construction with a clear, easy-to-read display and can show all input channels on the screen at once as T1, T2 etc. Each channel can log up to 9999 measurements with date/time details. Logged data can be downloaded to a PC and viewed using the supplied Windows* compatible software and USB cable. The software also allows logged data to be saved directly to Microsoft® Excel for further analysis, or can be used to log data in real-time. The units have a strong plastic case with a removable rubber protective holster and integrated flip-out stand.

- 1 and 2 RTD input channel options (T1-T2)
- °C / °F selectable
- Backlit 4½ digit LCD display
- Polarity indicator, Overload indicator
- Min, Max, Avg and Data hold functions
- Auto power off / low battery indicator
- Removable rubber protective holster with flip-out stand



Supplied software screenshot



HDR-126U (2 channel) model shown



HDR-126U (2 channel) top view

Technical Details		
Input	1 or 2 x RTD (attached via 4-pin DIN plug *)	
Measurement Range	Pt100 385	-200°C to +800°C (-328°F to +1472°F)
	Pt200 385, Pt500 385, Pt1000 385 Pt100 3916, Pt100 3926	-200°C to +600°C (-328°F to +1112°F)
Accuracy **	$\pm 0.05\% + 0.3^\circ\text{C}$ (+18°C ~ +28°C)	
Resolution	0.1 / 0.01 (-200°C ~ +199.99°C)	
Recording Capacity	9999 / channel	
Sampling Rate	4 times a second	
Display	Backlit 4½ digit LCD display	
Operating Temperature	0°C to +50°C (+32°F to +122°F) < 80%RH	
Storage Temperature	-10°C to +60°C (-4°F to +140°F) < 70%RH	
Power	4 x 1.5V AAA batteries (supplied)	
Dimensions	185mm (H) x 85mm (W) x 40mm (D)	
Weight	427g (with holster/batteries)	

Options	Order Code
1 Channel	HDR-116U
2 Channel	HDR-126U

* RTD sensor(s) not supplied - available separately

** Accuracy stated is for indicator only. The RTD sensor inaccuracy should also be considered

