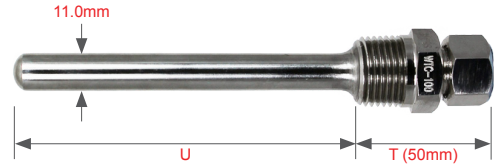


## WTC Thermowell Assemblies with Integrated Compression Fitting

The WTC threaded thermowells have an integrated compression fitting that includes a single compression olive to suit 6.0mm diameter tubes. They are fabricated from 316 Stainless Steel material and are supplied with a male process thread (complete with hexagon) which screws into the process.

The stem has an outside diameter of 11mm and a 7mm inside diameter. The pockets are stocked in standard lengths up to 300mm so can normally be supplied ex-stock if required urgently.



- 316 stainless steel standard material
- 11.0mm stem diameter (7.0mm Ø ID)
- 1/2 inch BSPT male process thread
- Integral compression fitting suits 6.0mm Ø tube
- Available ex-stock
- Replacement olives and nuts available

Technical Details	
Standard Material	316 Stainless Steel
Stem Diameter	11.0mm (ID 7.0mm)
Male Process Thread (standard)	1/2 inch BSP Tapered
Integral Compression Fitting	To suit 6.0mm diameter tube
Standard Lengths (U)	50mm, 100mm, 150mm, 200mm, 250mm, 300mm

Length	Order Code
50mm	WTC-050
100mm	WTC-100
150mm	WTC-150
200mm	WTC-200
250mm	WTC-250
300mm	WTC-300

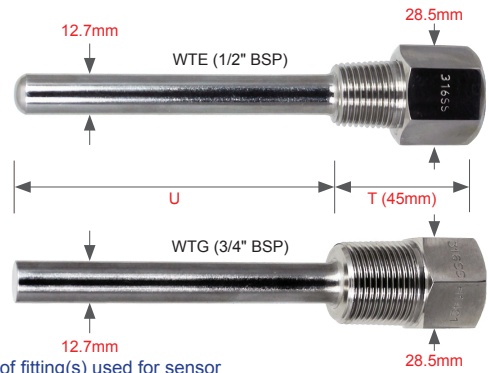
Minimum sensor length = stem length (U) + 50mm  
E.g. WTC-050 (50mm) is for a 100mm sensor

## WTE/WTG Threaded Thermowell Assemblies

Our thermowells are machined from solid barstock and can be supplied with a 1/2" BSPT or 3/4" BSPT male process thread (complete with hexagon) which screws into the process. The stems of the wells are supplied machined as standard from solid 316 stainless steel barstock for lengths up to 300mm. For longer lengths they may be of a fabricated construction. Tapered stems, which offer greater physical strength, can also be supplied.

Test certificates available on request. Alternative materials available.

- Supplied with 1/2" BSPT or 3/4" BSPT male threaded connection
- Machined 316 Stainless Steel stem as standard (up to 300mm)
- 12.7mm outside stem diameter (7.4mm Ø ID)
- Fabricated options available



Note: minimum sensor length = stem length (U) + 45mm (T) + length of fitting(s) used for sensor

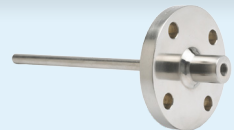
1	Threaded Thermowell Assembly		Code
	1/2" BSP Tapered Male Process Thread		WTE
	3/4" BSP Tapered Male Process Thread		WTG
2	Standard Material		Code
	316 Stainless Steel		316
3	Outside Stem Diameter (Ø)	Inside Stem Diameter (Ø)	Code
	12.7mm	7.4mm	12.7
4	Female Entry Thread		Code
	1/4" BSP Parallel		FC
	1/2" BSP Parallel		FE
5	Stem Length (mm) taken from below thread (U)		Code
	As required to suit your application		e.g. 180
6	Optional Adjustable Compression Fittings (to suit sensor diameter)	1/4" BSPT Code	1/2" BSPT Code
	6.0mm	CF60CS	CF60ES

See page 63 for our full range of adjustable compression fittings.

Order Code (example)	1	2	3	4	5	6
	WTE	- 316	- 12.7	- FC	- 120	- CF60CS

## WF Flanged Thermowell Assemblies

Can be manufactured to suit your requirements. Available ex-stock with a 1.5" ANSI 150 lb Raised Face flange, machined from 316 Stainless Steel solid barstock (up to 300mm length). Alternative materials available.



## WTEF PTFE Threaded Thermowell Assemblies

Machined from solid PTFE barstock. The PTFE material has excellent hygienic corrosion-resistance properties. Commonly used in acid tanks where metals cannot withstand the acid attack. As standard they are supplied with a 1/2" BSP tapered male process thread (complete with hexagon) and 1/4" BSP parallel female instrument connection. The stem has an outside diameter of 12.7mm and a 7.4mm inside diameter. Available ex-stock.



Contact sales for further information

